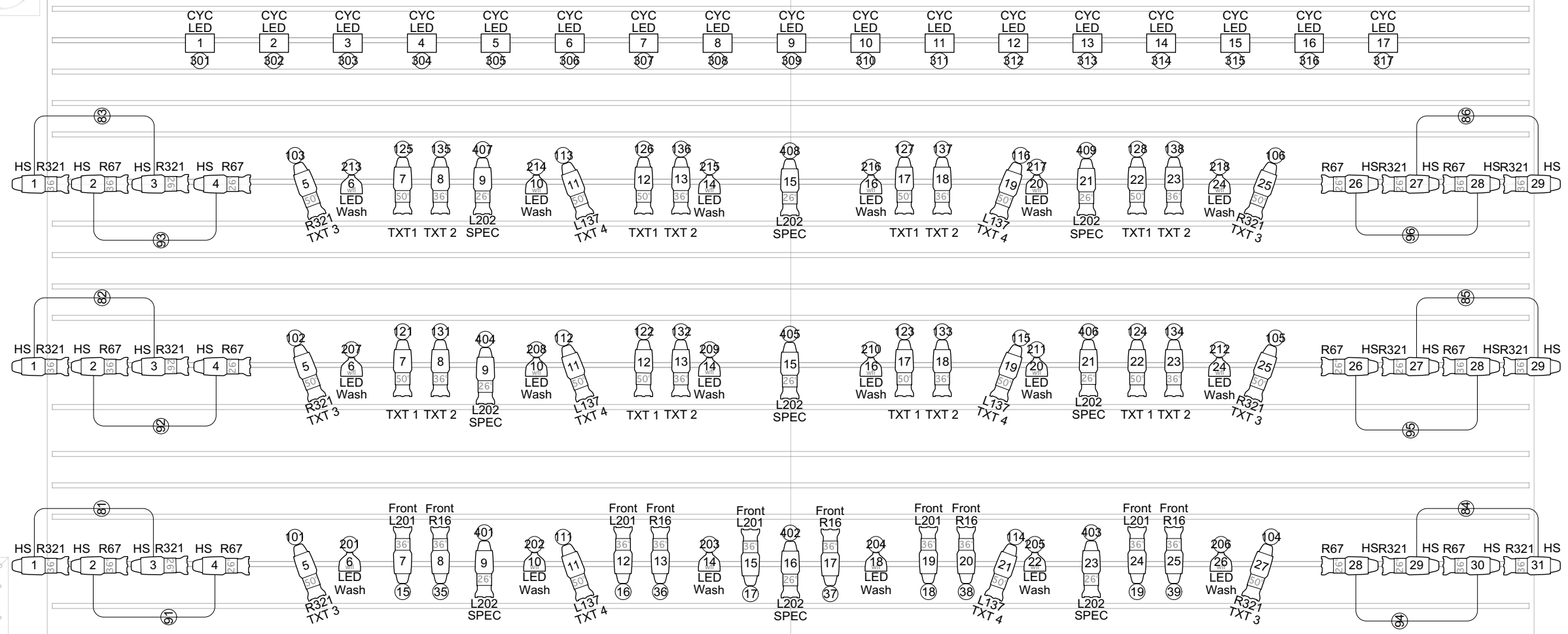
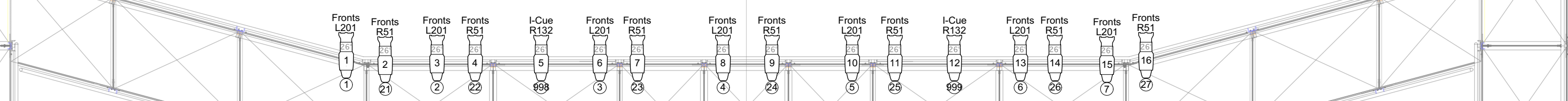
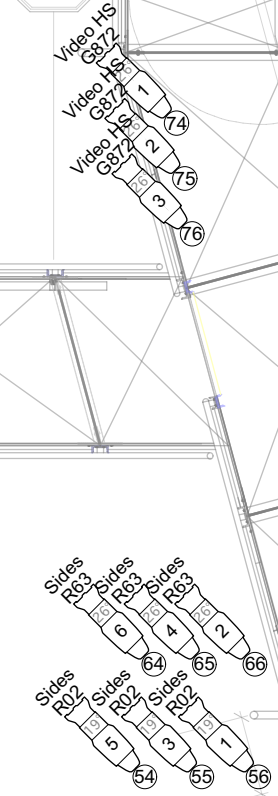
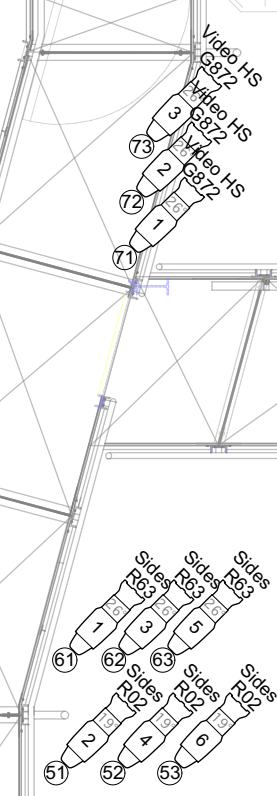


30 28 26 24 22 20 18 16 14 12 10 8 6 4 2 0 2 4 6 8 10 12 14 16 18 20 22 24 26 28 30



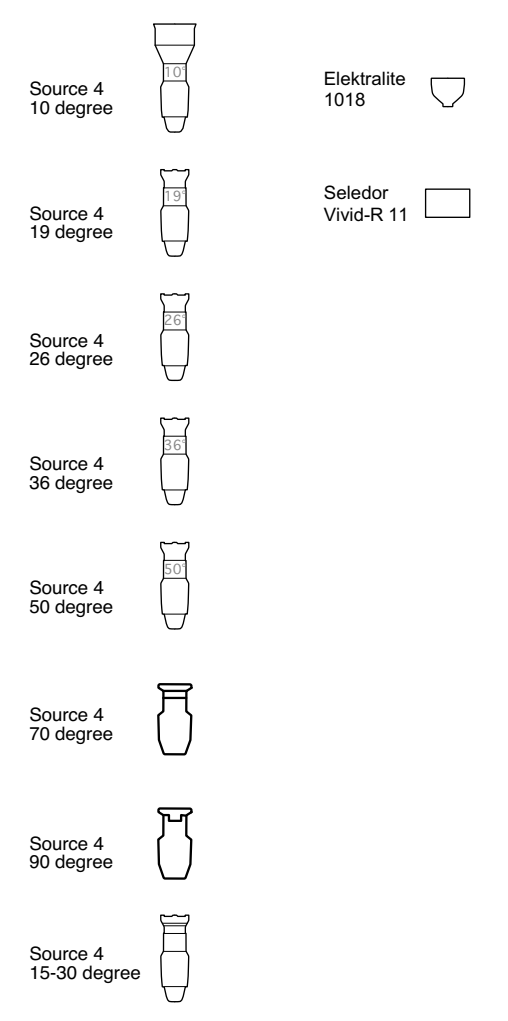
19 WHITE CYC
18 CYC LIGHTS
17 FS BLACK
16 STORAGE
15 LEGS
14 LX 3
13 BORDER
12 (empty)
11 (empty)
10 MID TRAVELER
9 LX 2
8 BORDER
7 (empty)
6 LEGS
5 PROJECTION SCREEN
4 LX 1
3 (empty)
2 MAIN DRAPE
1 MAIN TEASER



30 28 26 24 22 20 18 16 14 12 10 8 6 4 2 0 2 4 6 8 10 12 14 16 18 20 22 24 26 28 30 32

Ensemble Theatre Company Santa Barbara

KEY



- NOTES:
1. All Vivid-R fixtures on Cyc need 40W Lenses
 2. Spot Lights set up on a need by need basis.

ARTISTIC DIRECTOR: JONATHAN FOX
PRODUCTION MANAGER: RICHARD CROY
MASTER ELECTRICIAN: JOSPEH LORENZEN

NEW VIC REP PLOT

SCALE: 1/4" = 1'-0"
DATE: 10.23.2015

REVISION: 1
DRAFTED: J.JL